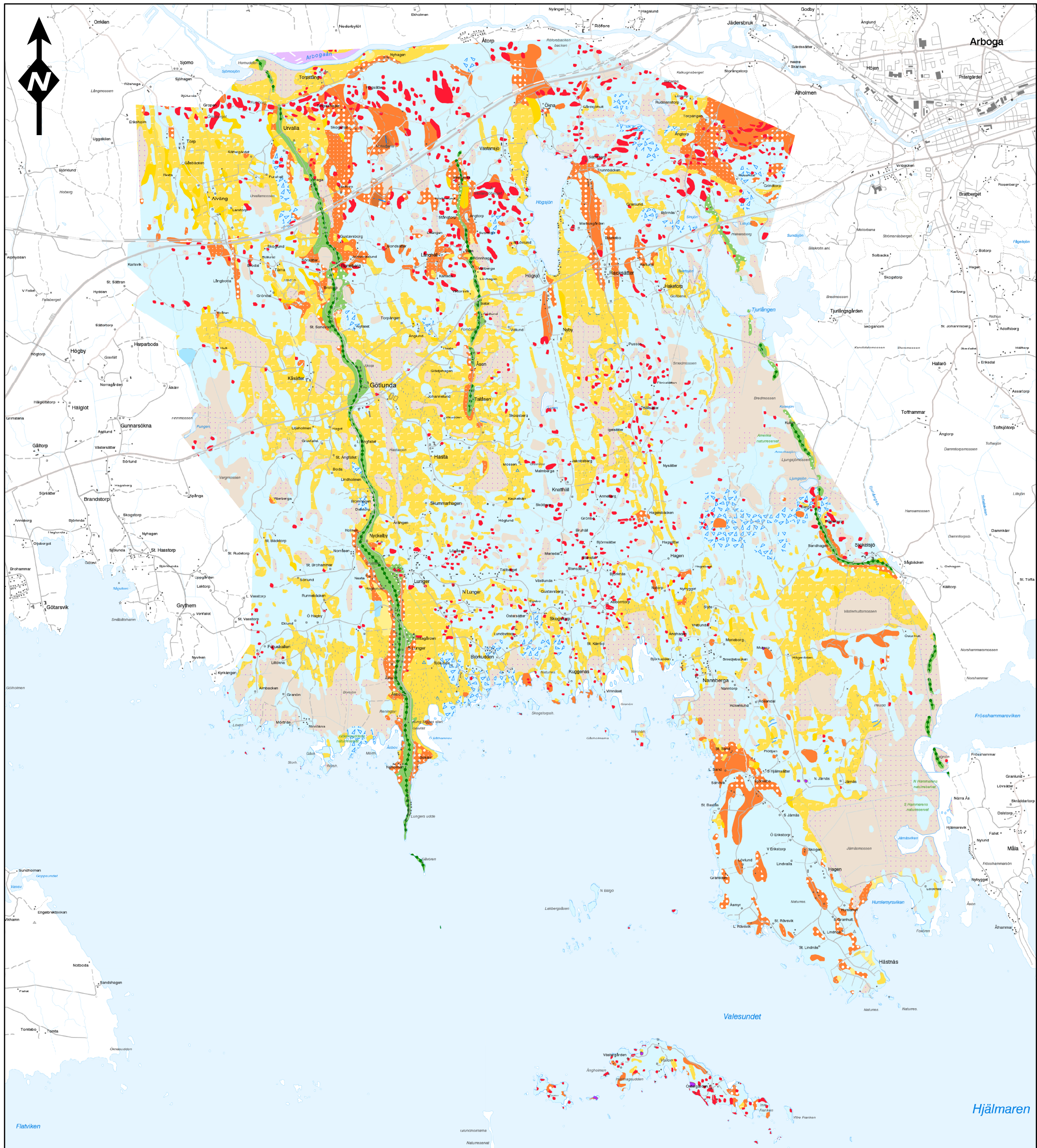
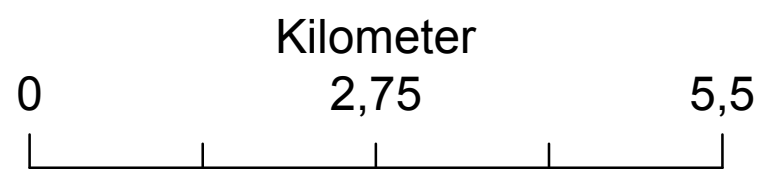


Bilaga 2 Jordartskarta



- | | | |
|-----------------------------|-----------------------|---|
| Mossetorv | Svallsediment, grus | Dyn |
| Kärrtorv | Glacial lera | Krön på isälvsavlagring |
| Svåmsediment, ler--silt | Glacial silt | Moränrygg |
| Flygsand | Isälvs sediment | Hög blockfrekvens på annan jordart än morän |
| Gytjelera (eller lergyttja) | Isälvs sediment, sand | Blockrik yta |
| Postglacial finlera | Isälvs sediment, grus | |
| Postglacial lera | Sandig-siltig morän | |
| Postglacial grovlera | Sandig morän | |
| Silt | Fanerozoisk diabas | |
| Postglacial finsand | Urberg | |
| Postglacial sand | | |



© Lantmäteriet
Ritad av: Patrik Zaman
Ansvarig: Erik Alsteryd